

Quick Start Guide for SNM-128 Standard:

Minimum System Requirement:

CPU: Intel Core 2 Duo E6750

System Memory: 2GB

Video Memory: 512MB

HDD Space: 80GB

Operating System: Windows XP, Vista, Direct X 9.0

Display Resolution: 1,280 x 1,024

Software Installation:

1. Download the SNM-128S by clicking on the link from the demo site. The latest released version is 1.6.0
2. Save to your computer.
3. SNM-128S Setup_v1.6.0.exe should have downloaded to your computer.



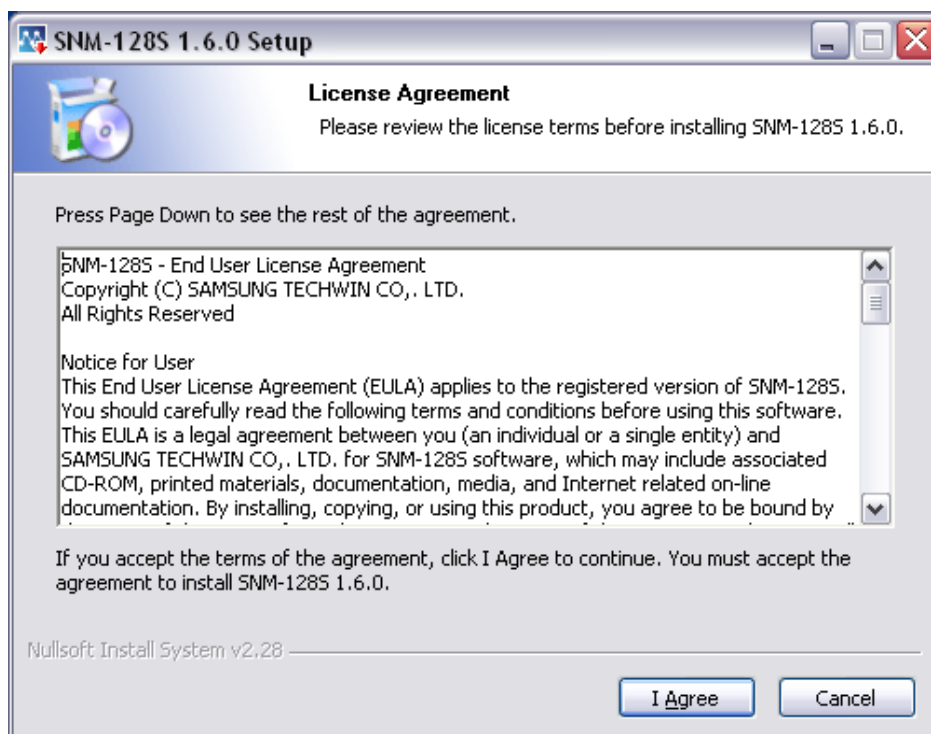
4. Double Click on the file to install



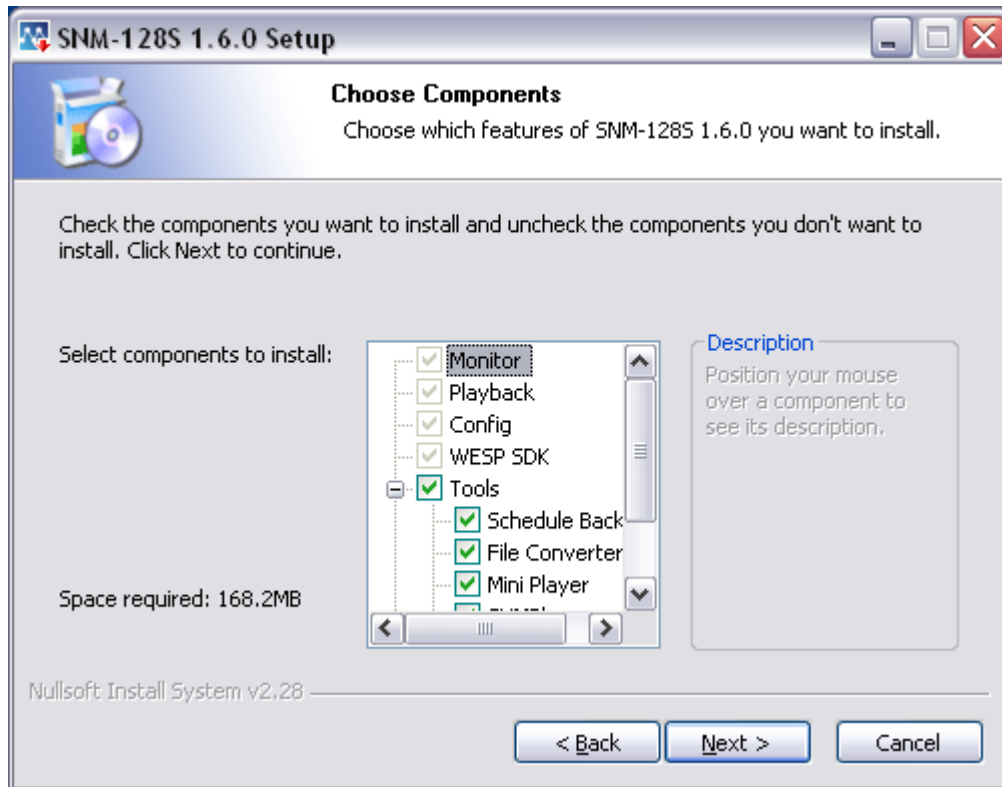
5. Click Run to install



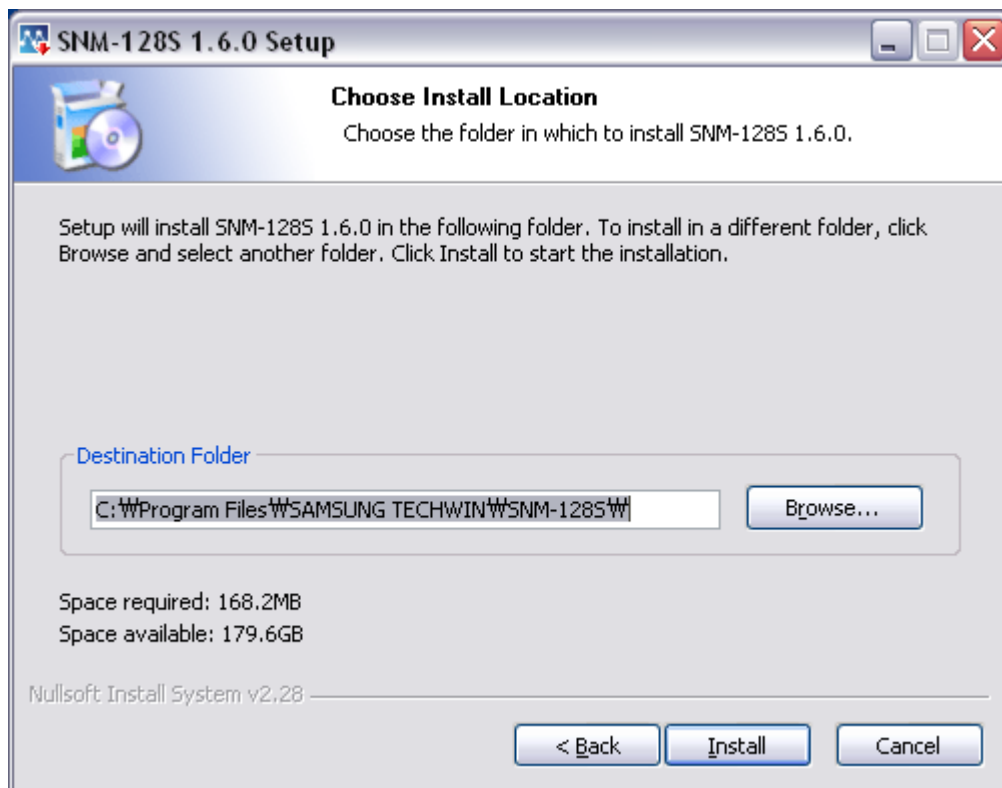
6. Select the language and click Ok



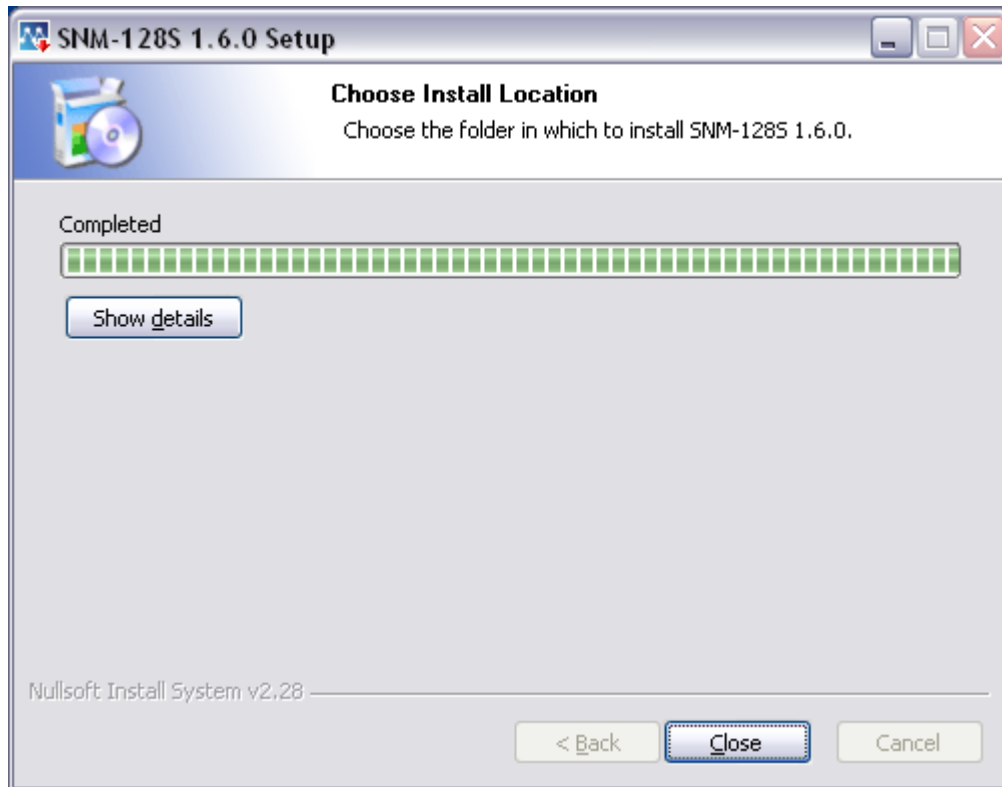
7. Click I Agree



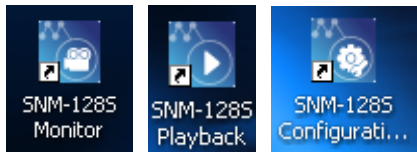
8. Click Next



9. Click Install



10. After install is complete, click Close

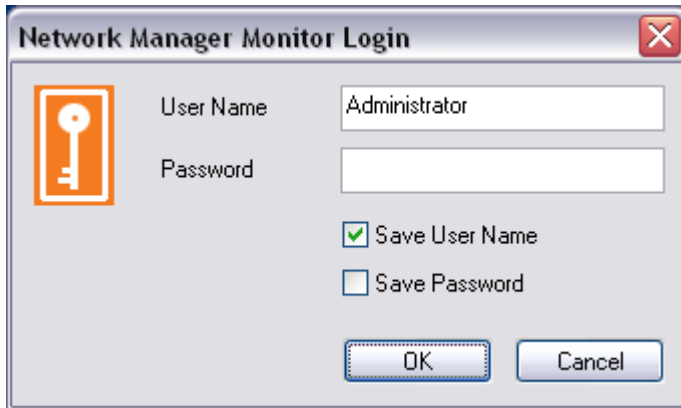


11. Three icons will be installed on your desktop.

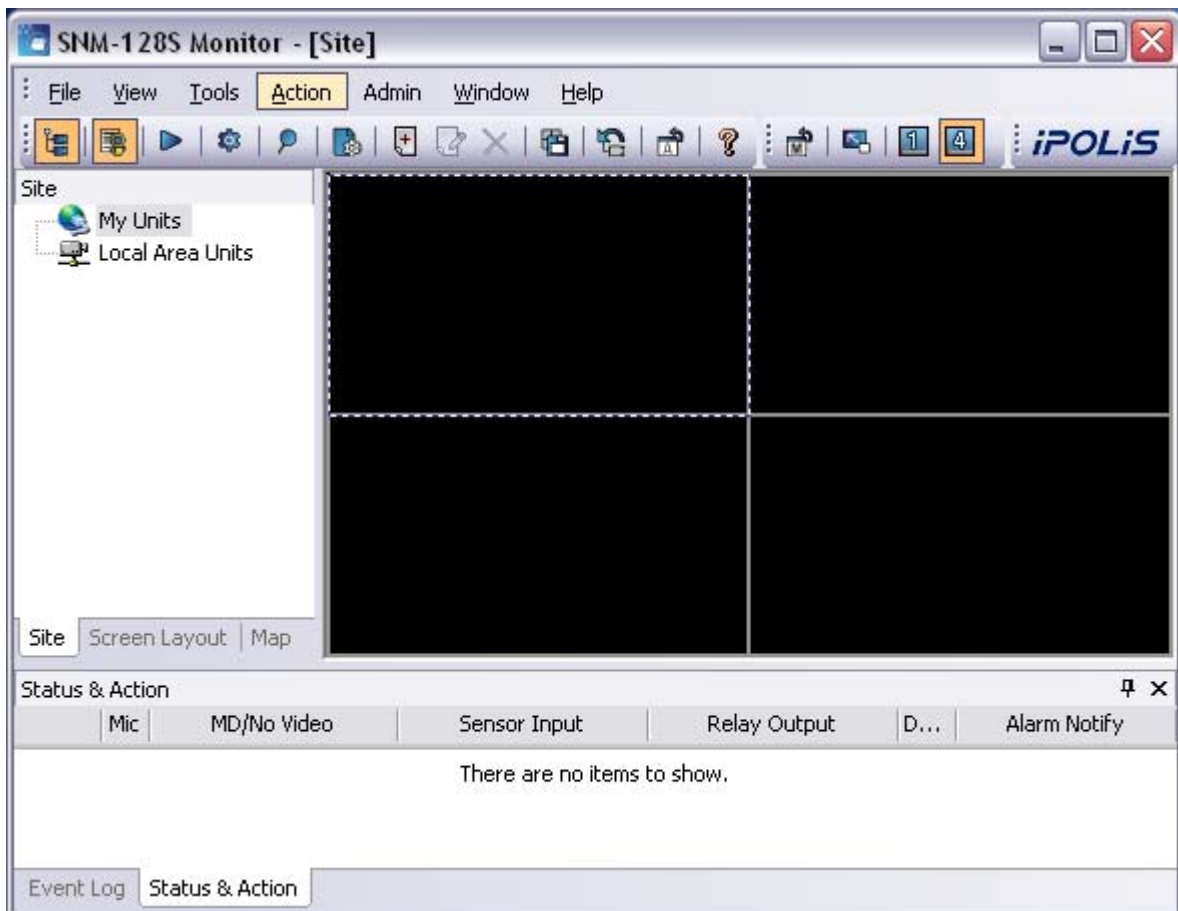
- SNM-128S Monitor – Main program to view live video feed from the network
- SNM-128S Playback – Program to playback video from DVRs
- SNM-128S Configuration – Program to configure IP cameras and DVRs

Device Setup:

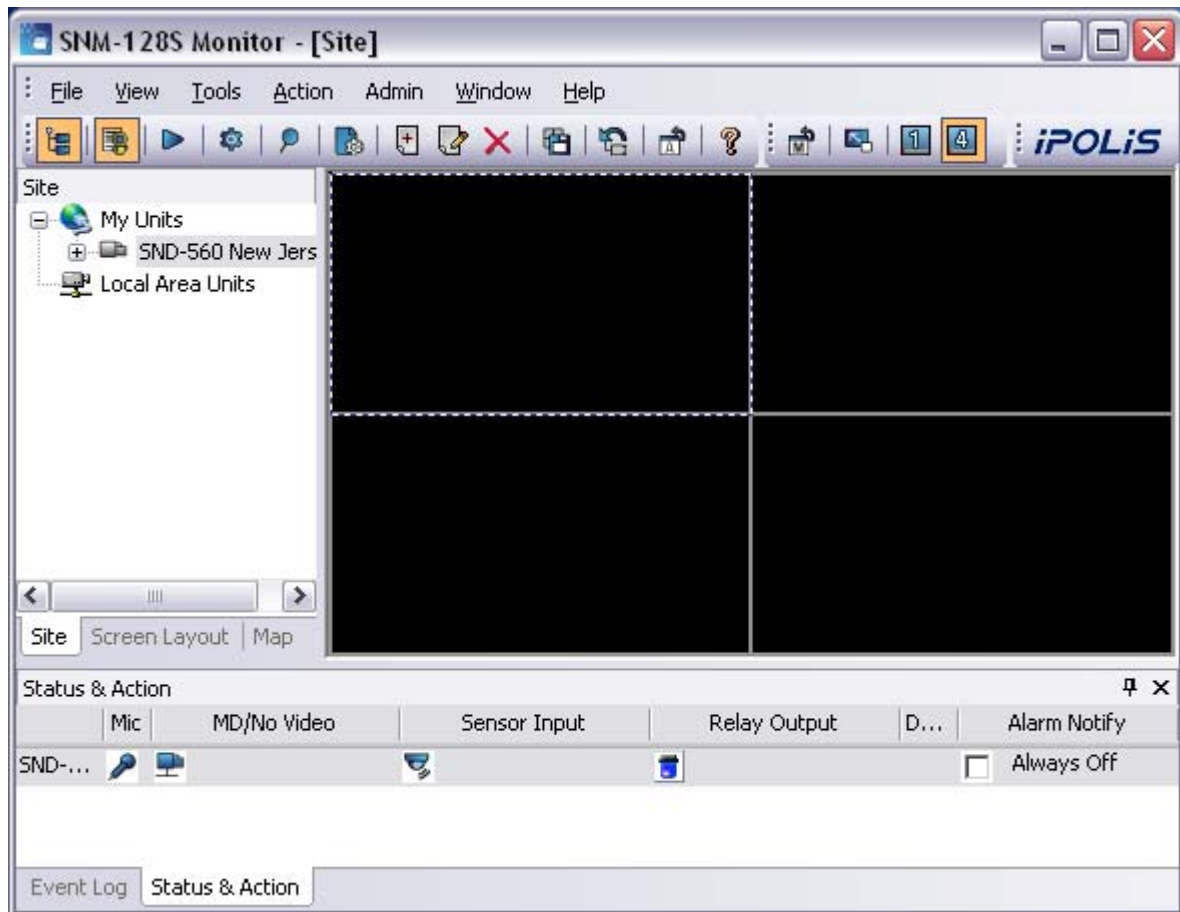
12. Launch SNM-128S Monitor



13. Enter 12345 for the password and check the Save Password and click Ok

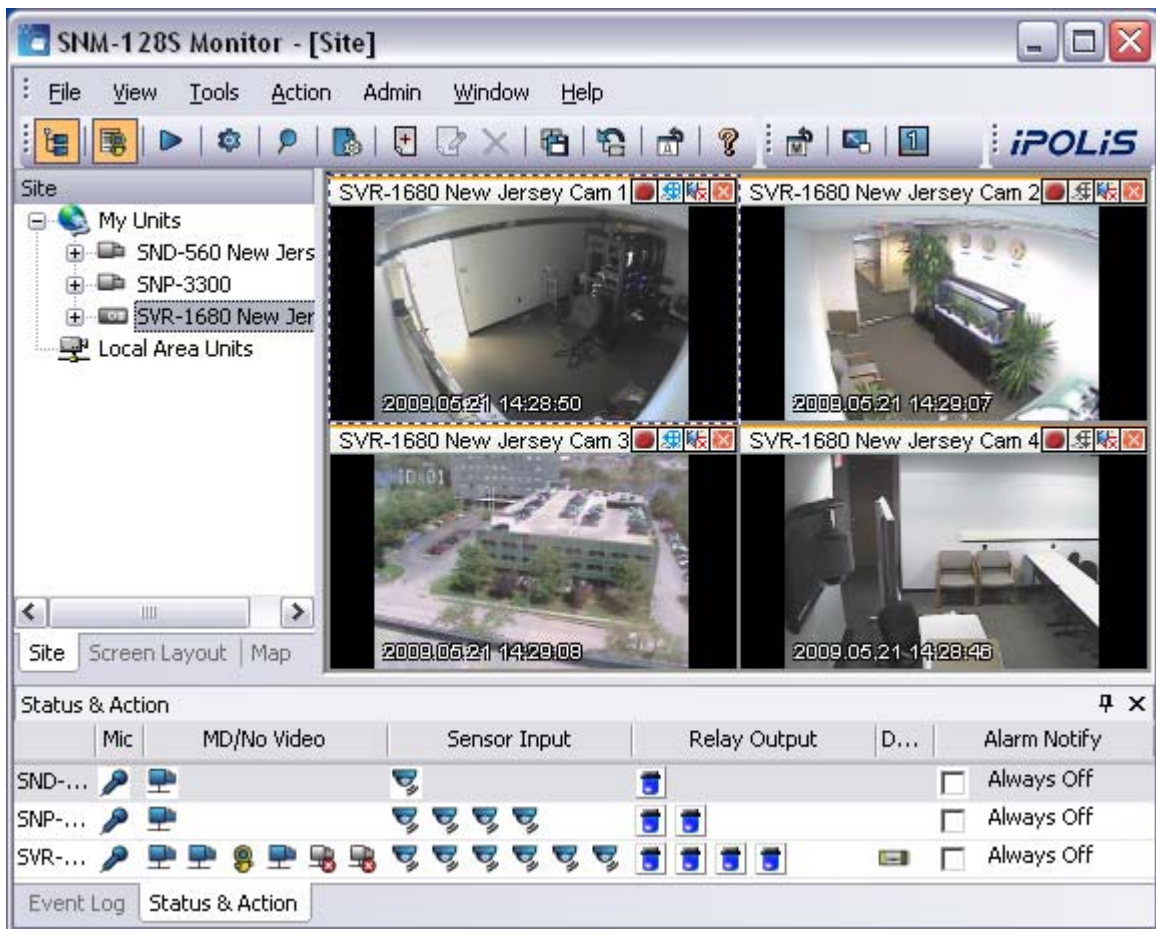


14. Click on Action and Select Add



18. Drag the camera on the camera tree to one of the screen
19. Select the Action again and repeat steps 14 and enter the following information
 - Address: 63.119.206.4
 - Port: 4000
 - Name: SNP-3300A New Jersey
 - User ID: user1
 - Password: 11111111
20. Click on Find. You will notice the unit information in the dialog box
21. Click Ok

22. Repeat the step 19 and enter the following information
 - Address: 63.119.206.3
 - Port: 80
 - Name: SVR-1680 New Jersey
 - User ID: user1
 - Password: 11111111
23. Click on Find. You will notice the unit information in the dialog box
24. Click Ok



25. Now you will see three device on the camera tree
26. Please refer to SNM-128 user manual for more information